

Recently a homeopath emailed in to ask why his experience with a case differed to that proposed by the Families software. We wanted to share this with to explain the difference in approach required.

Homeopath:

Age 59 **Female Occupation** pschoanalyst

Present Illness sore pain after injury, blows

drawing pain knee

drawing pain hip

lameness stiffness

wrist

reading difficult small

and made the "Analyze" within Families

The result did not work out to Rutaceae. Why is this?

I don't know if the program was made for simple things like that but as I understood Sankarans work the organism expresses himself on different levels not only mind stuff. For me Ruta shows deep connection between eye, wrist, blows etc.

Answer:

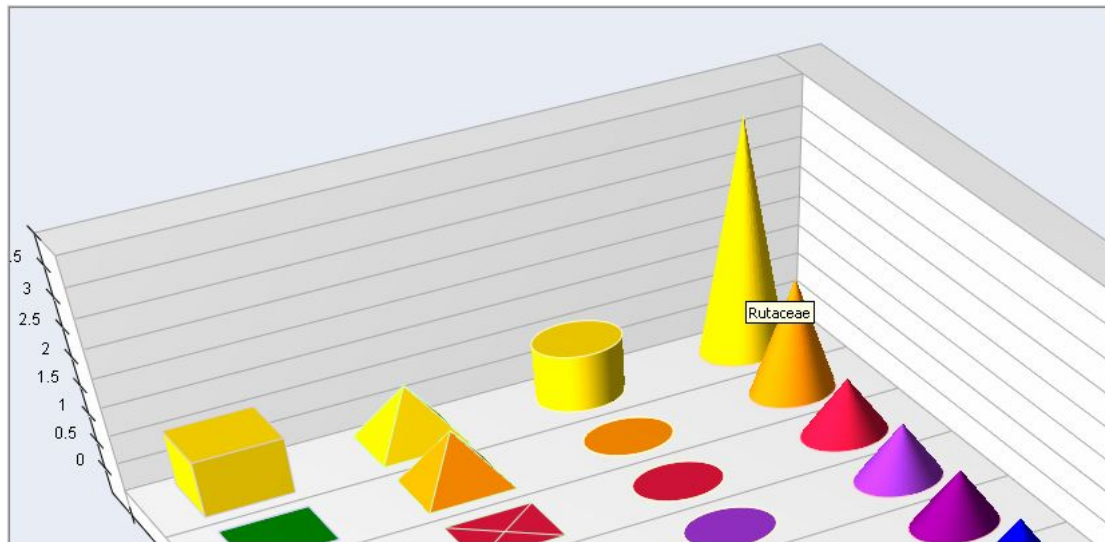
When examining the themes of the case you provided I do understand your difficulty!

While I agree with you about seeing the connection to Ruta in the case this is actually not how others work this. You mentioned Sankaran and it is correct in what you say. Of course Sankaran is only one part of the overall Families system and his view is his own unique perspective.

But staying with the example of when working a case using a families approach Sankaran provides words like

Compressed
Constricted
Twisted
Squeezed
Numb

and so on to describe the 'sensations' the patient experiences who may need a Rutaceae family remedy. So when we see these expressions at any level we think of Rutas. The Families remedy chart for these words supports this:



Remedies

Do not include miasm Do not include colour remedies Apply family equalisation

I think this case is: plants minerals animals

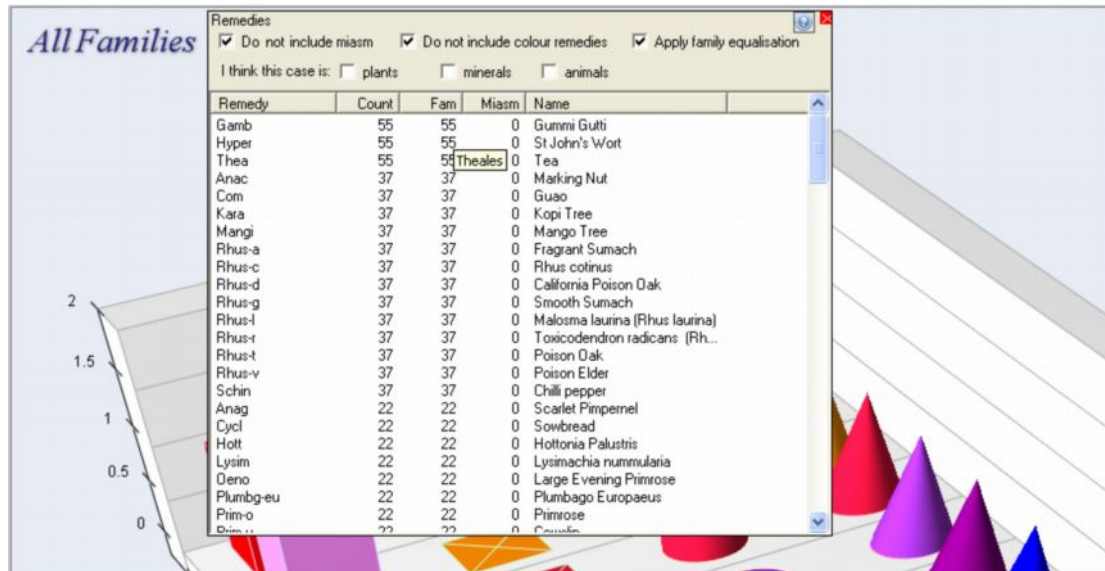
Remedy	Count	Fam	Miasm	Name
Aegle	132	132	0	Aegle marmelos
Ang	132	132	0	Bark of Galipea Cusparia
Cit-l	132	132	0	Lemon
Cit-v	132	132	0	Bitter Orange
Jab	132	132	0	Jaborandi
Ptel	132	132	0	Hop Tree
Ruta	132	132	0	Garden Rue. Bitterwort.
Xan	132	132	0	Prickly Ash
Agra	41	41	0	Bluebell
Aloe	41	41	0	Socotrine Aloes
Colch	41	41	0	Meadow Saffron
Convo-a	41	41	0	Bindweed
Croc	41	41	0	Saffron
Dios	41	41	0	Wild Yam
Diosin	41	41	0	Dioscorin
Dios-p	41	41	0	Dioscorea Petrea
Helon	41	41	0	Unicornroot
Lilt	41	41	0	Tiger Lily
Orni	41	41	0	Star of Bethlehem
Par	41	41	0	One-berry
Raja-s	41	41	0	Amphibterygium adstringens (...)
Sabad	41	41	0	Cevadilla Seed.
Sars	41	41	0	Wild Liquorice
Scut	41	41	0	Scorpius (Scit)

The data you typed into Families essentially breaks down to these words

drawing
 pain
 knee
 sore
 blows
 hip
 wrist
 small

difficult
injury

In Families these words do not refer to the sensation described by the patient but rather the location and description of the pain and this leads to the Theales family of remedies as shown below:



Also the Sankaran approach utilises the prevalent miasm in the case to help differentiate remedies within a given family.

Furthermore, in our experience, there needs to be much more theme data supplied than above into Families so that it can reach an intelligent suggestion.

So I hope this has explained to you the differences and how it is important to try to use theme words based on the theme words suggested by our homeopathic teachers in their published literature